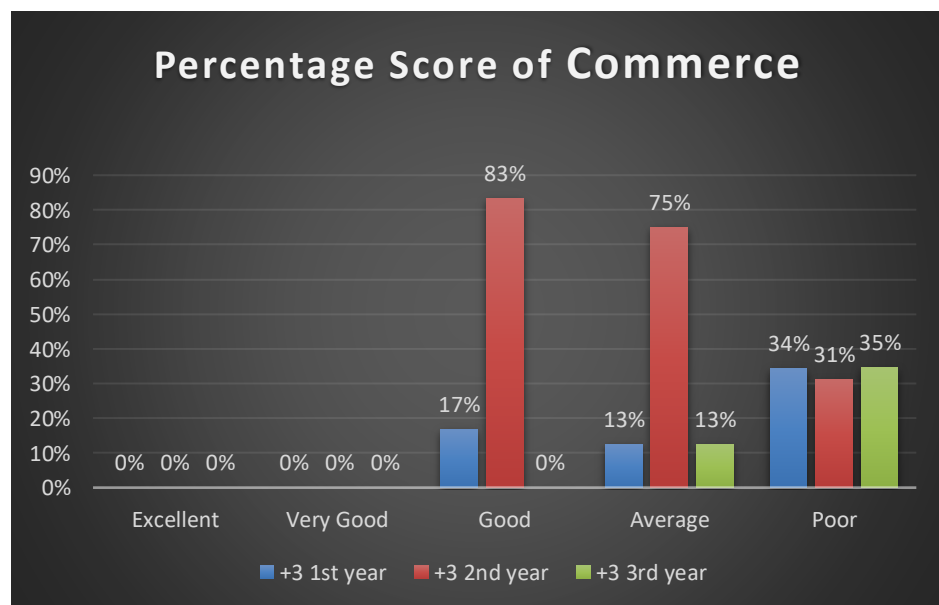
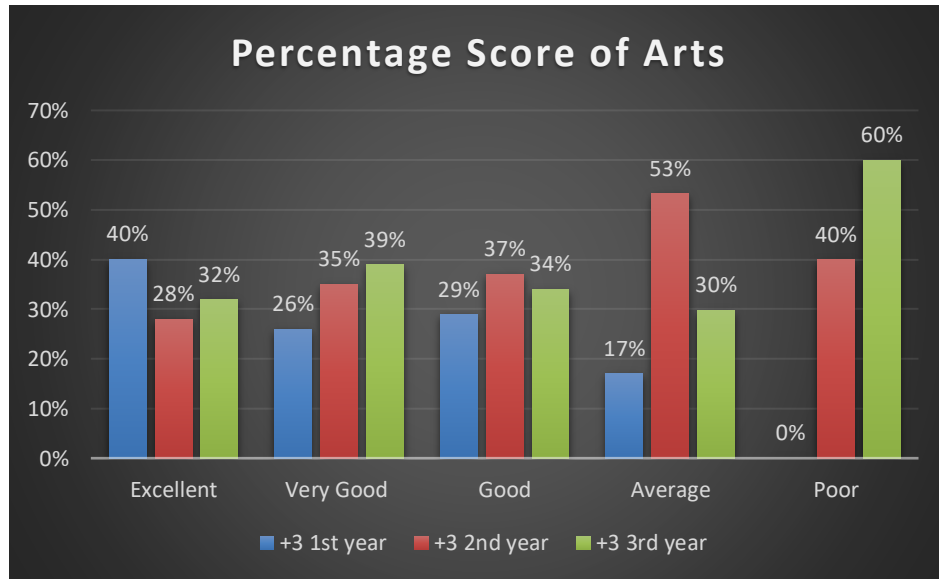
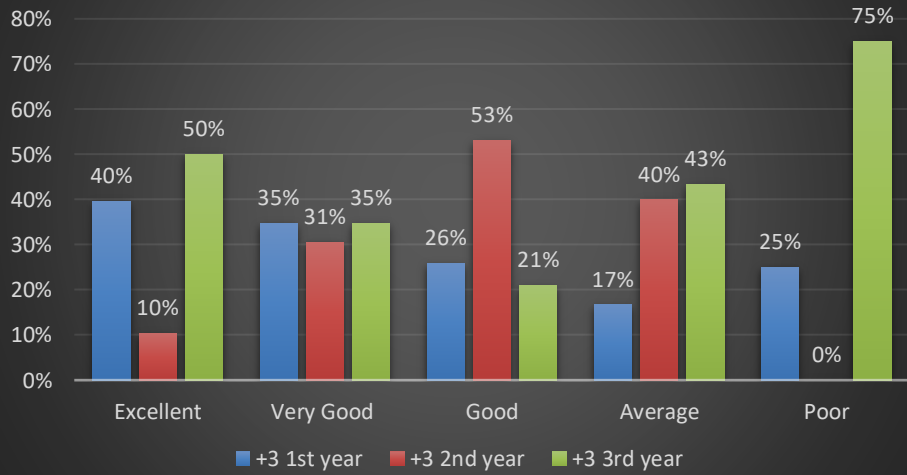


B.J.B. (Autonomous) College, Bhubaneswar
Student Feedback on Curriculum
Session 2022-2023

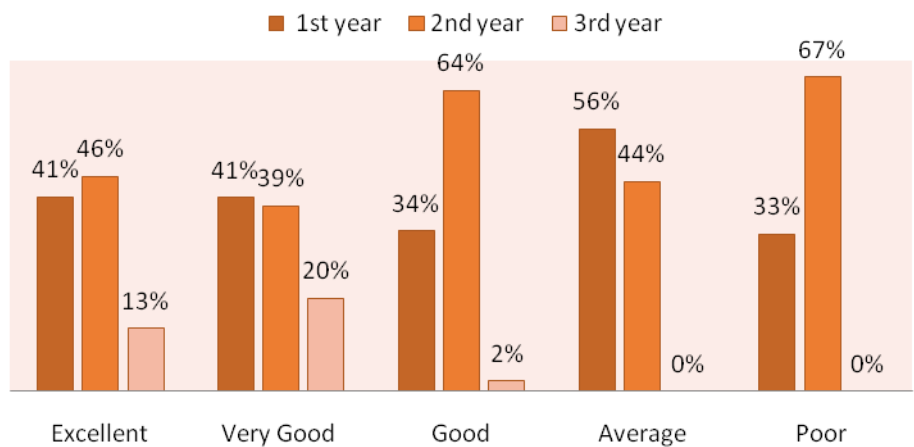
1. Curriculum contents provide inspiration in terms of social and environmental awareness.



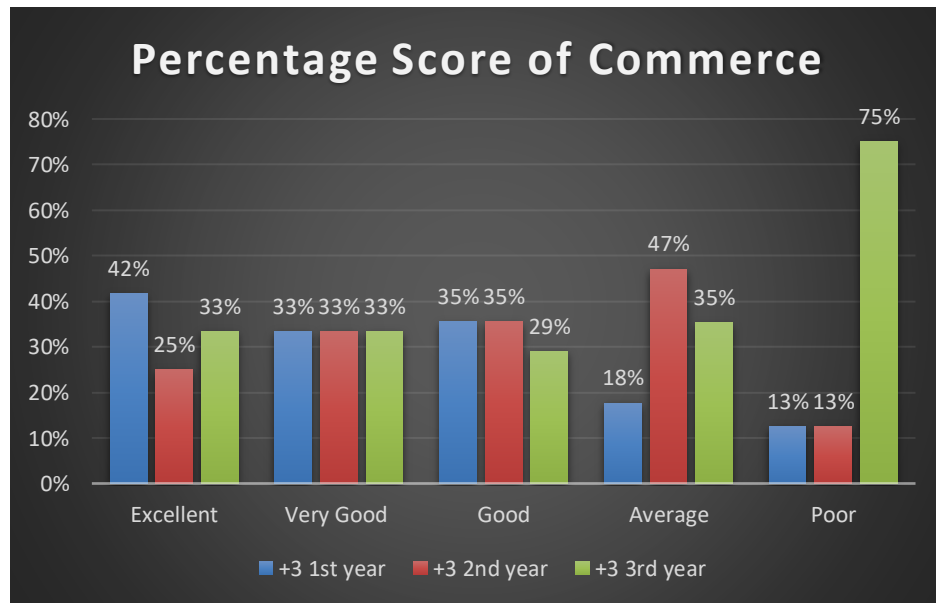
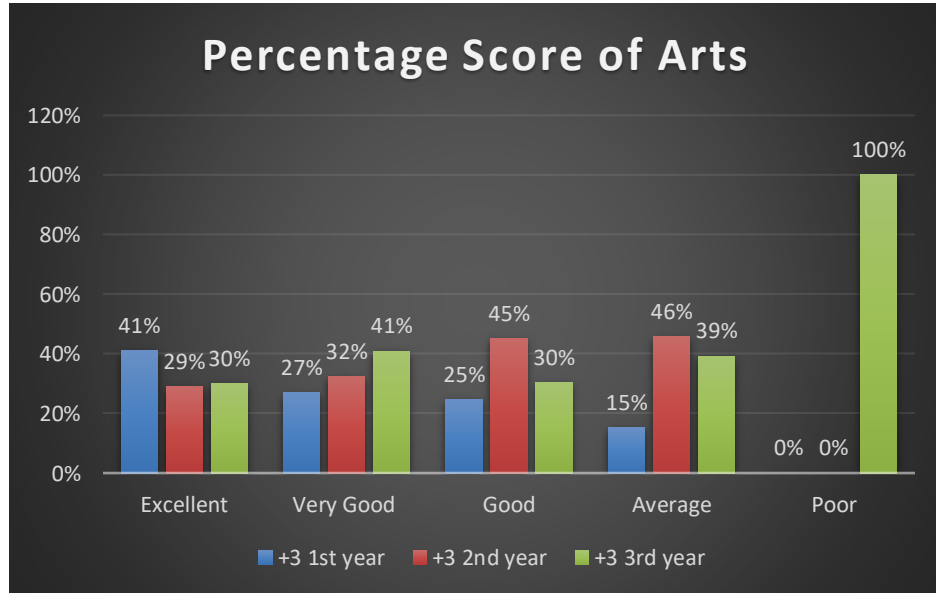
Percentage Score of Science

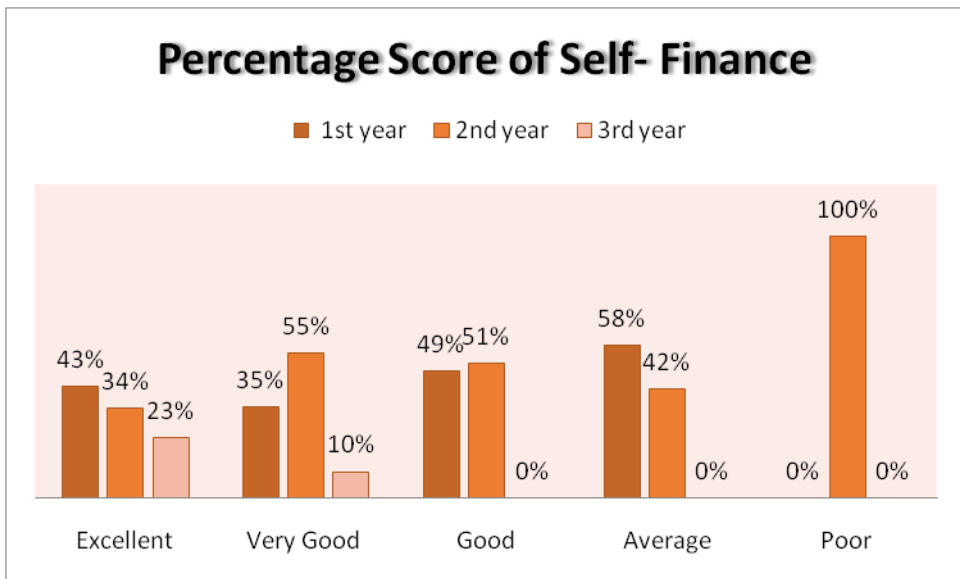
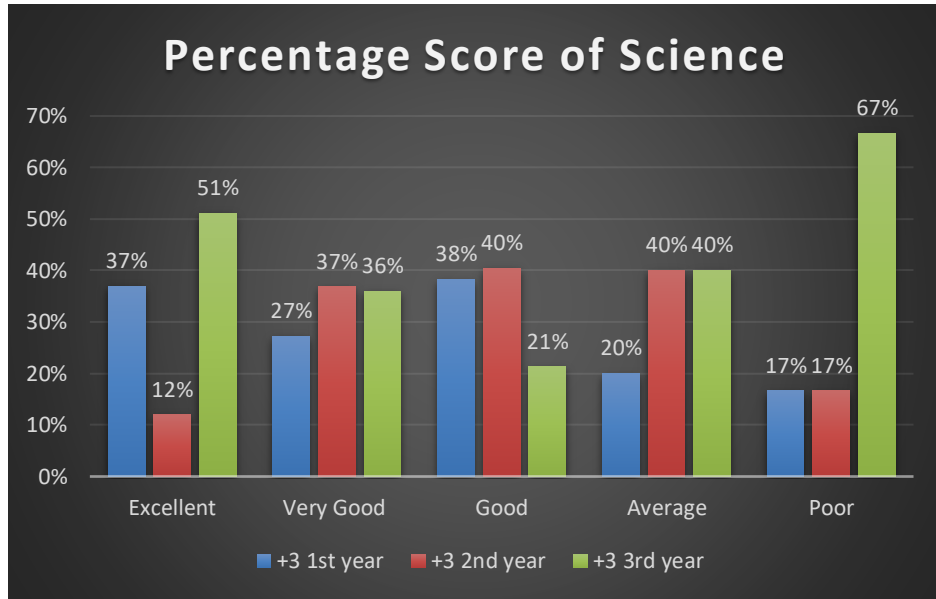


Percentage Score of Self- Finance

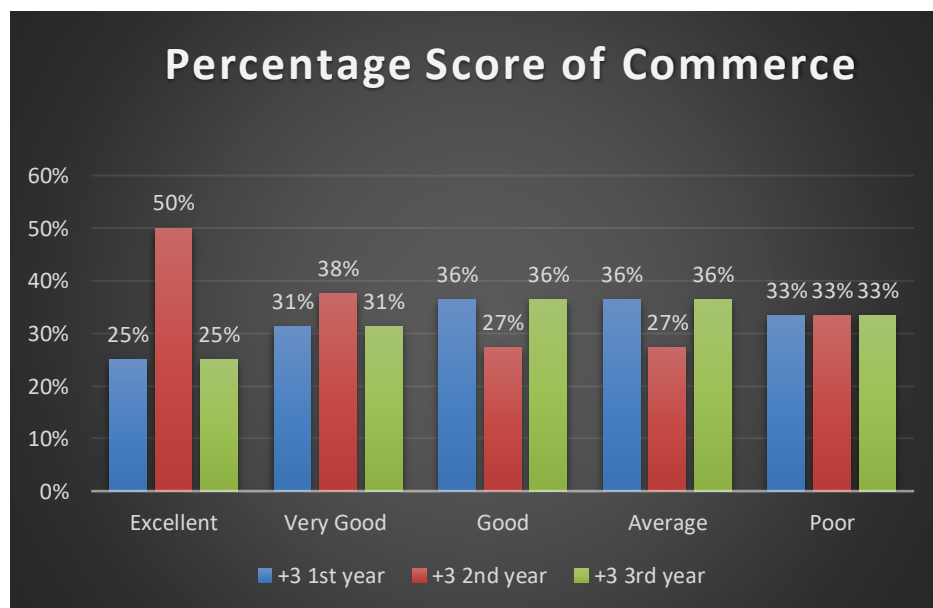
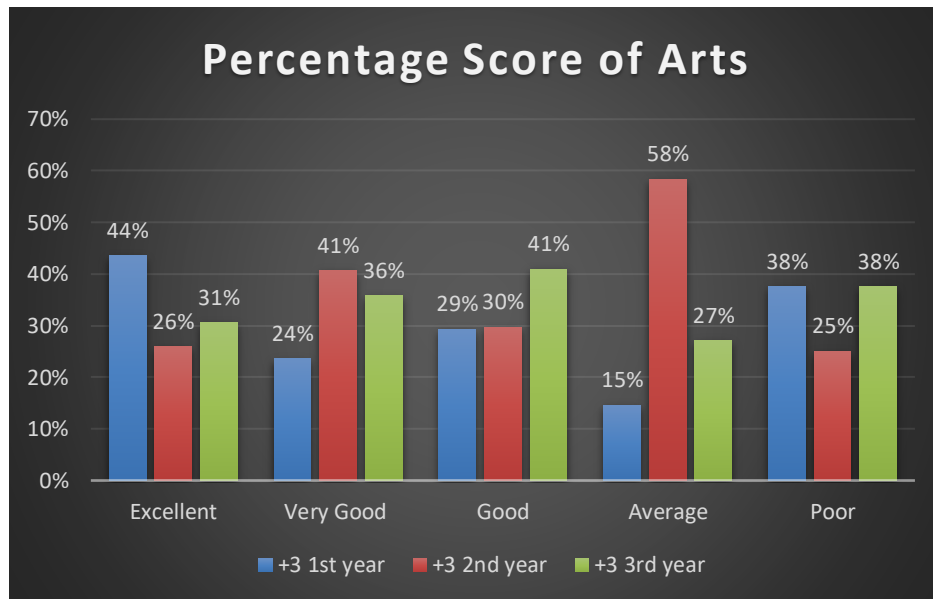


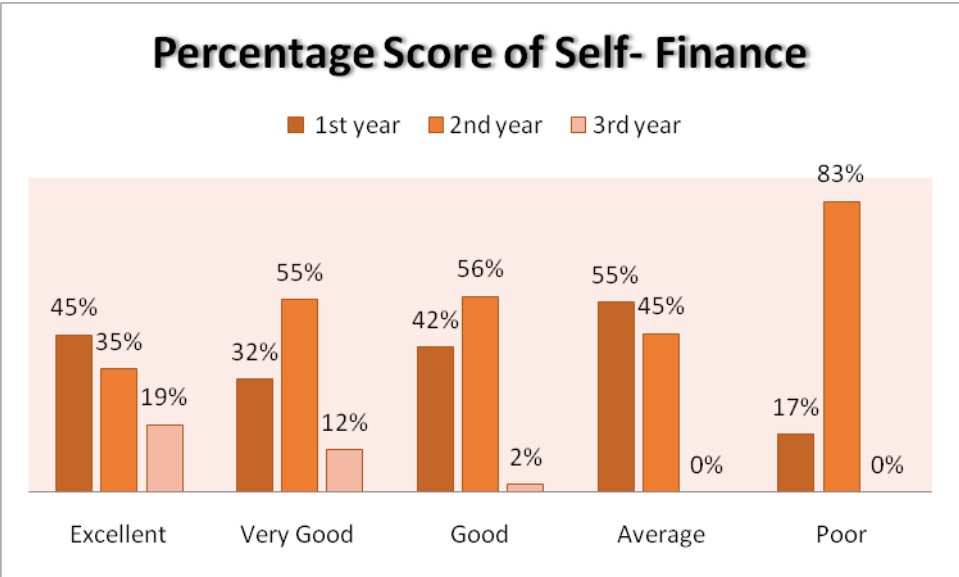
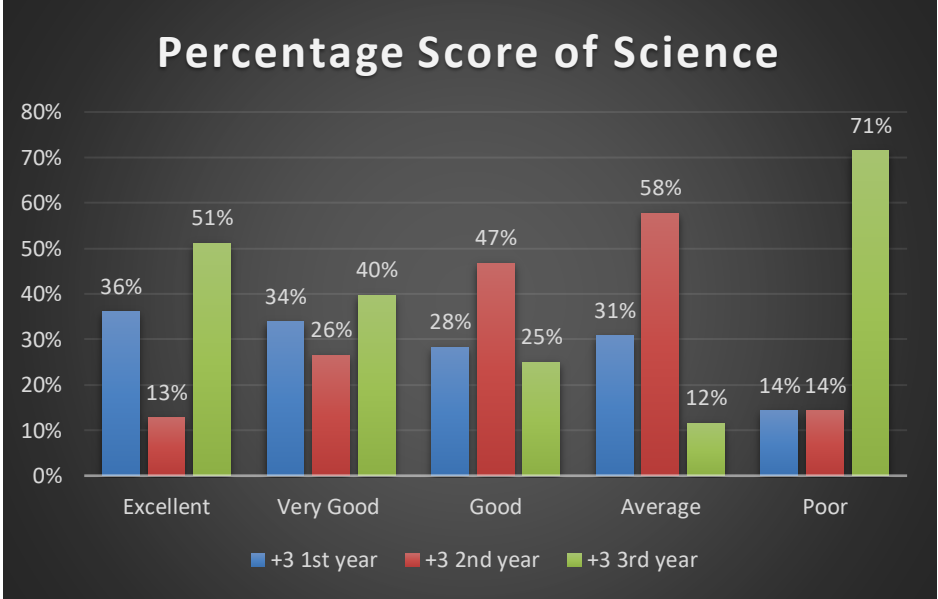
2. Rate the appropriateness of the sequence of the courses provided in the curriculum:



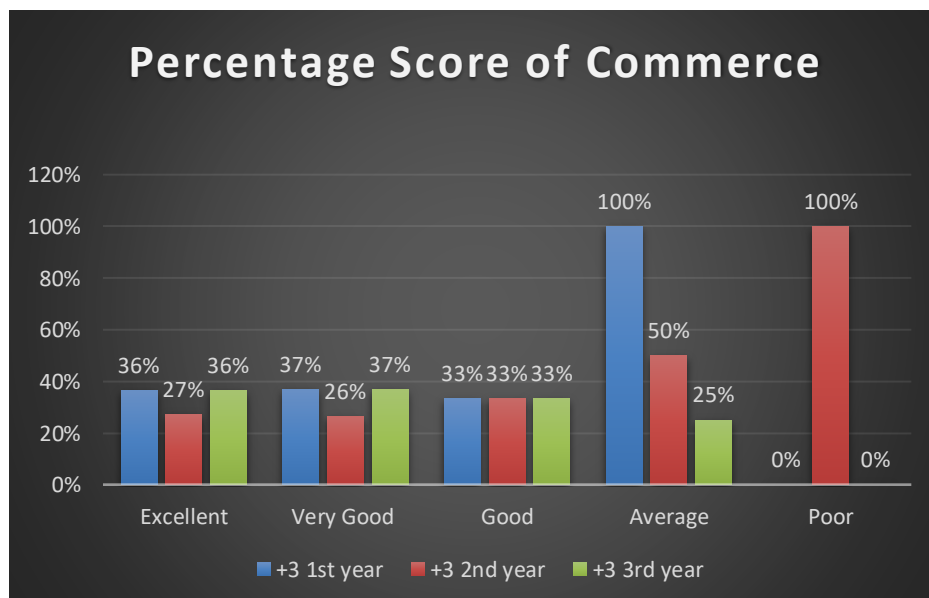
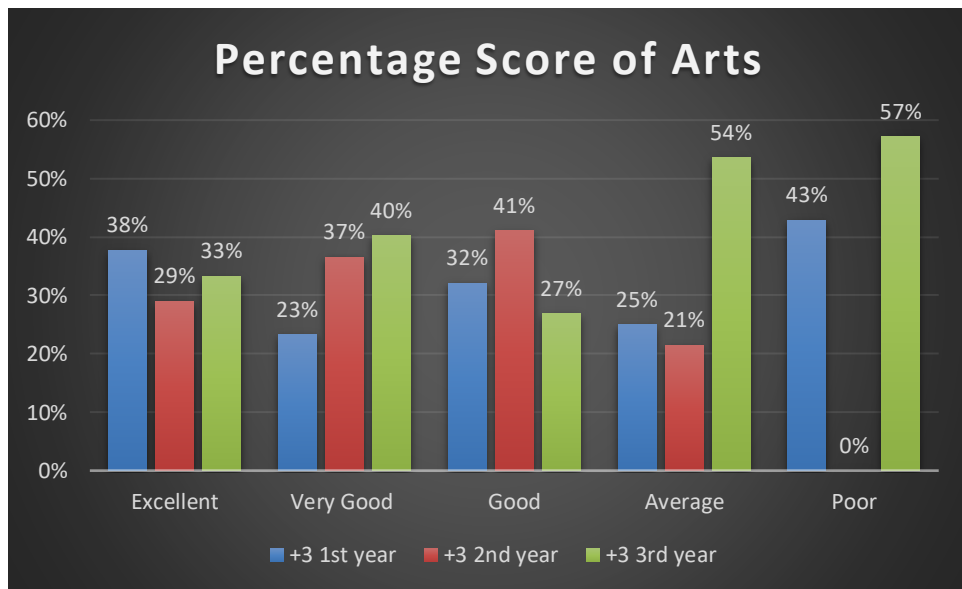


3. Rate the depth of the syllabus of the courses in relation to the competencies expected by industry/current global scenarios:

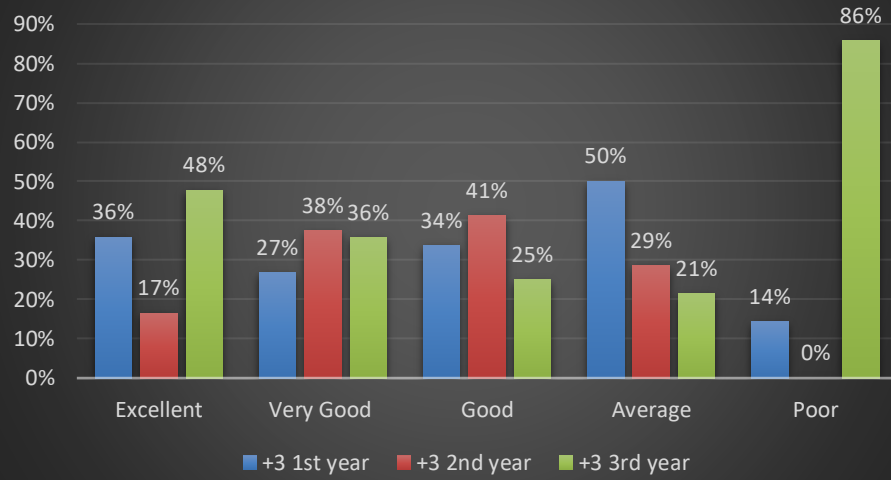




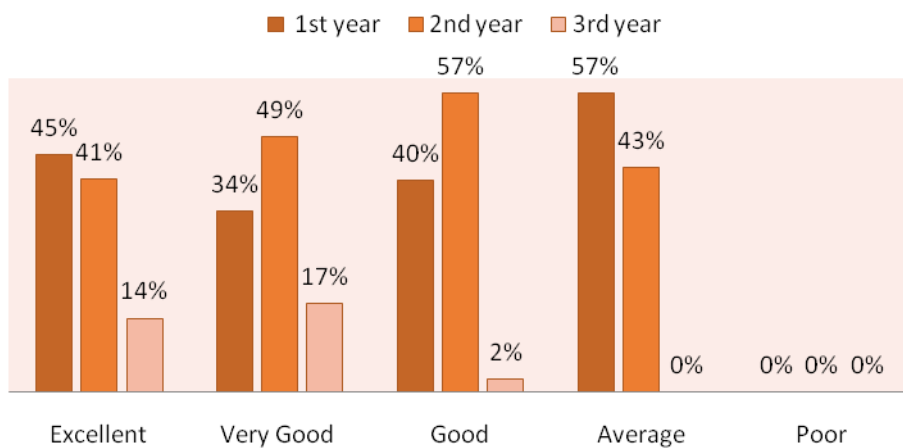
4. Rate the sequence of the units in the courses:



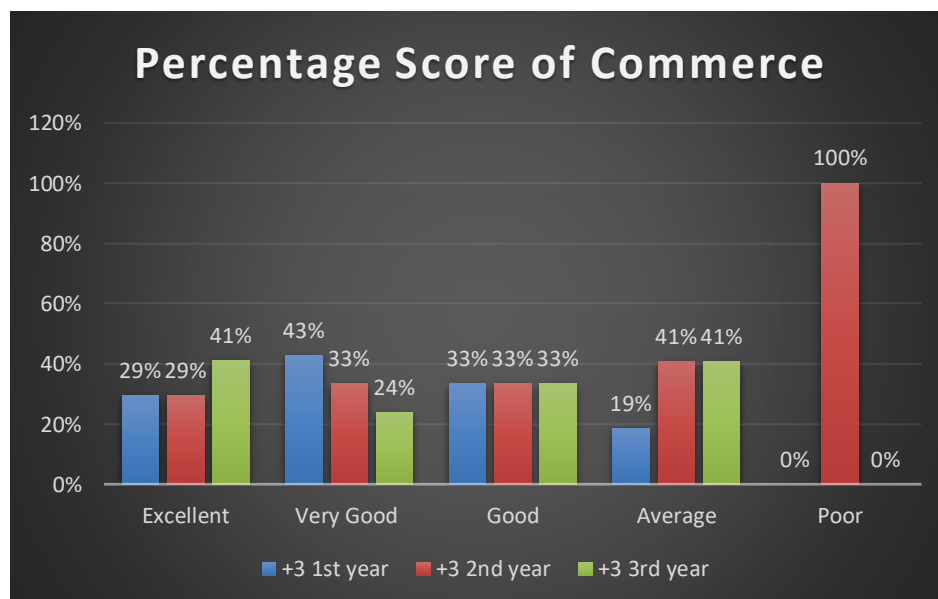
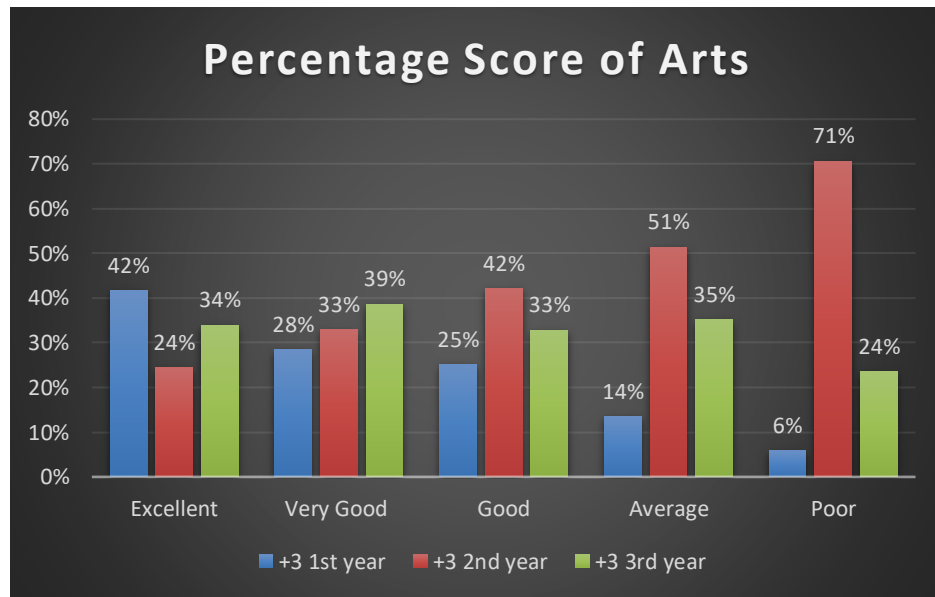
Percentage Score of Science



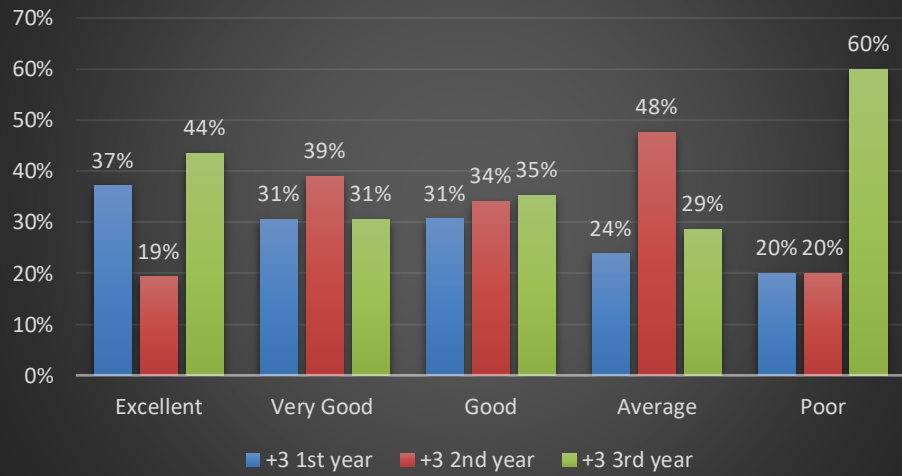
Percentage Score of Self- Finance



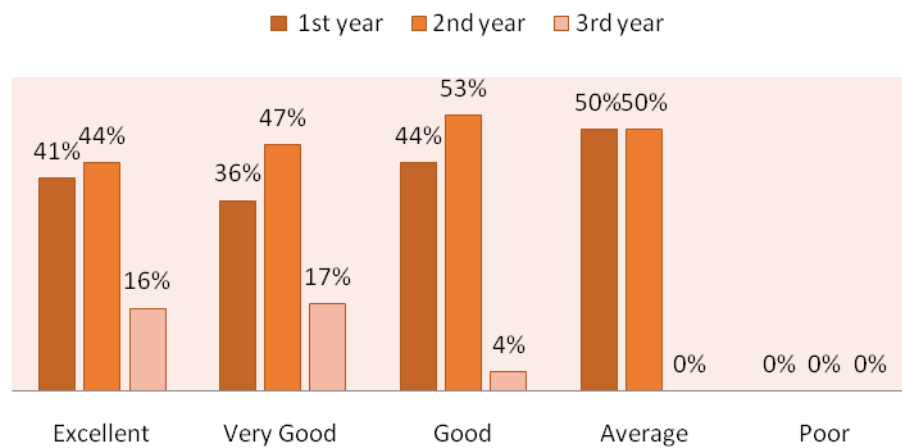
5. Rate the adequateness of the textbooks and reference books prescribed for the courses:



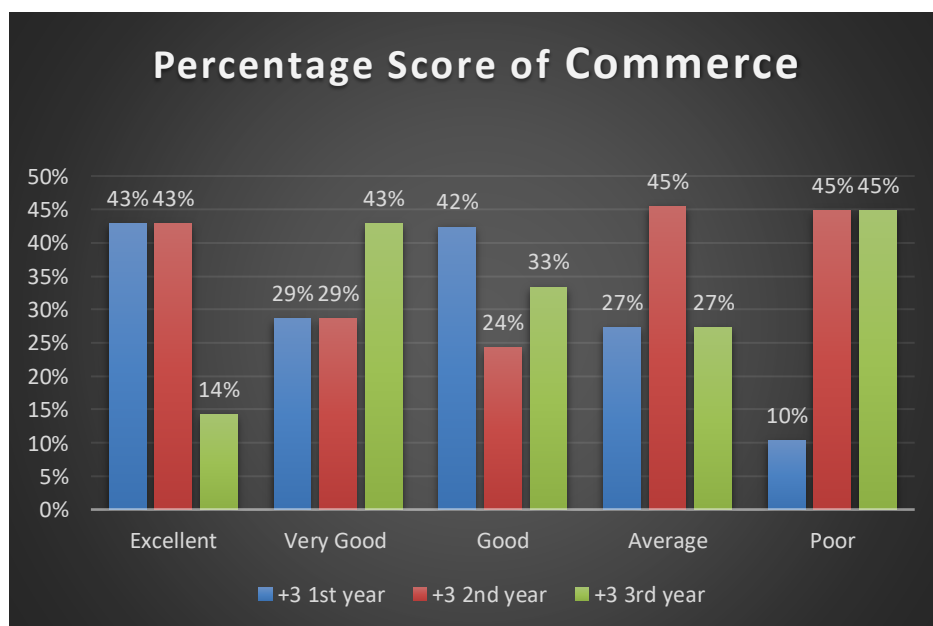
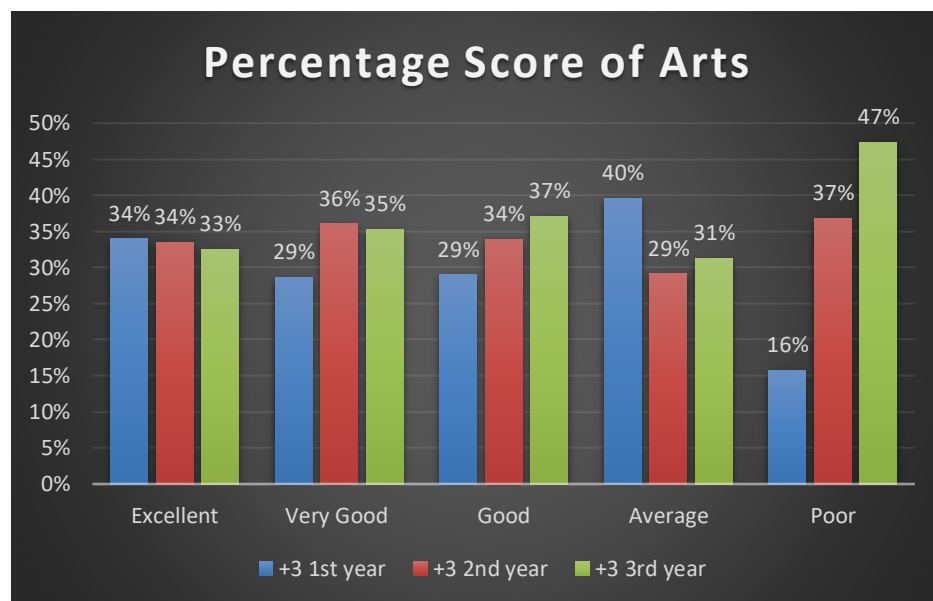
Percentage Score of Science

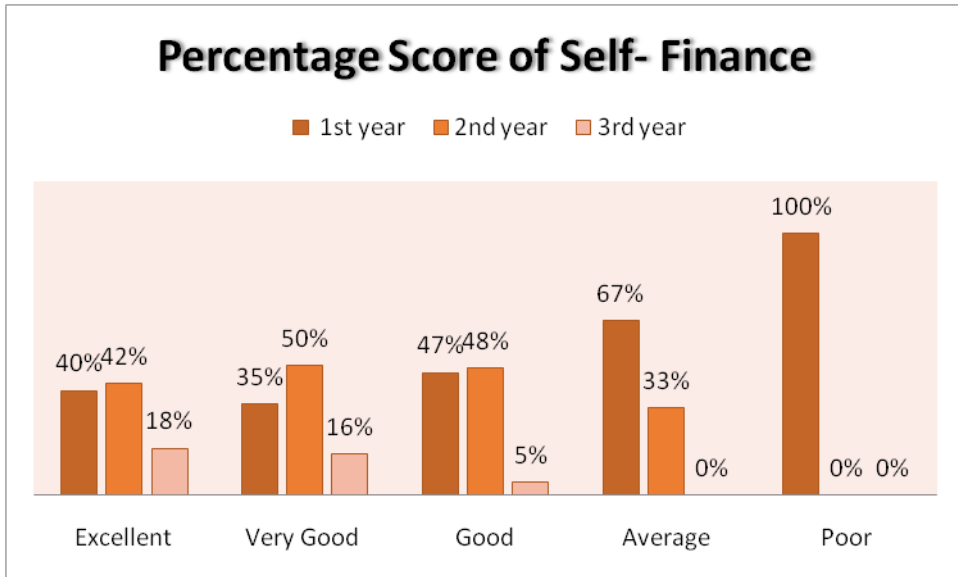
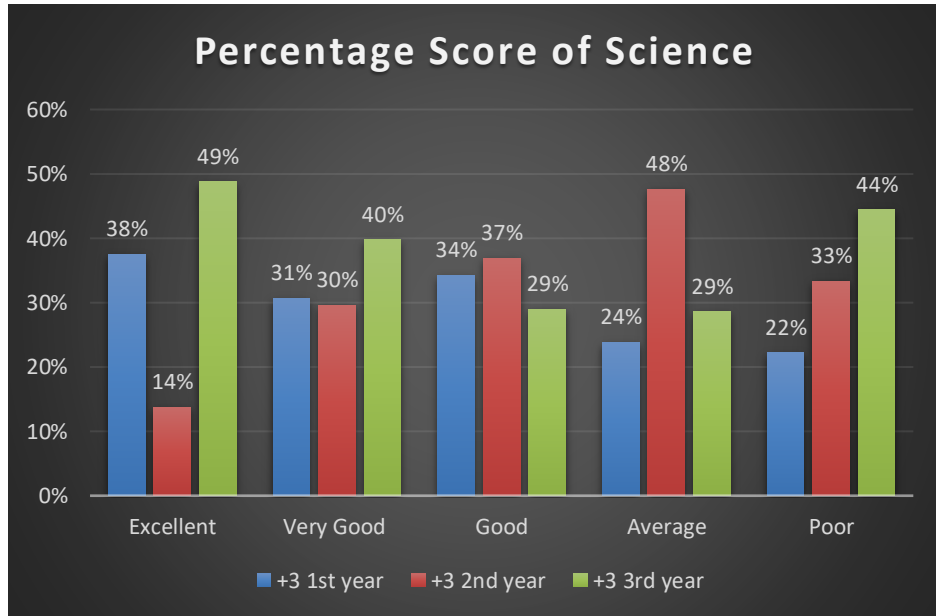


Percentage Score of Self- Finance

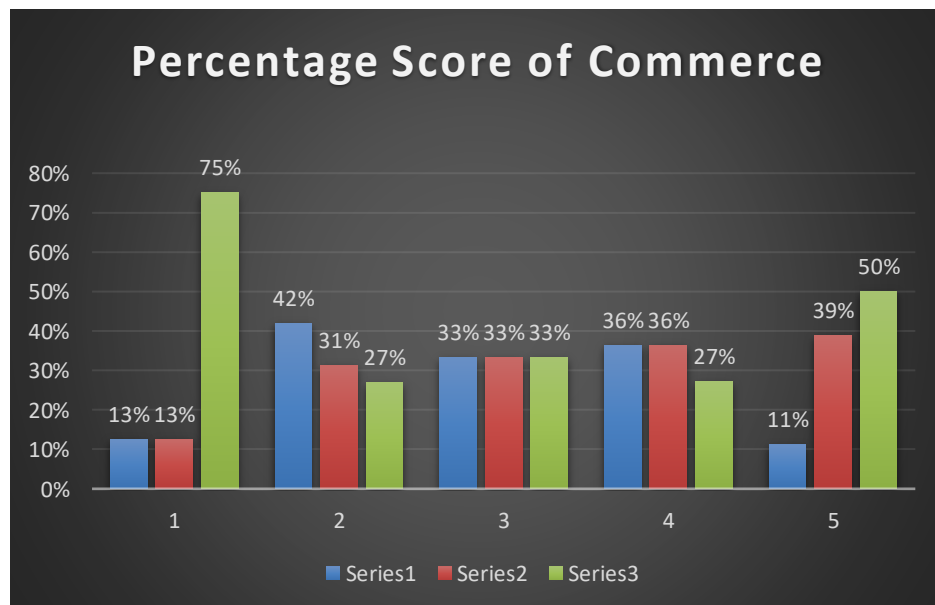
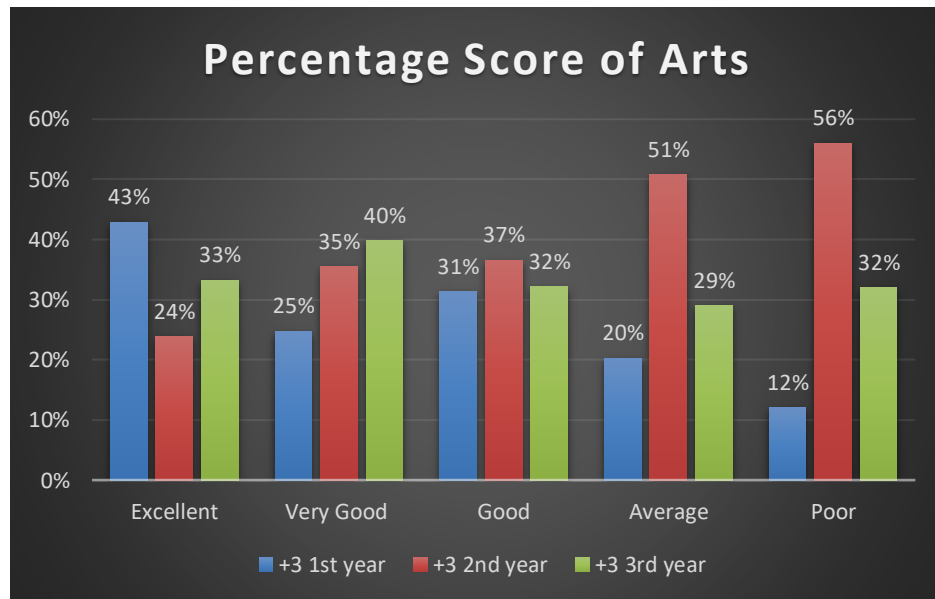


6. Rate the syllabus content of the courses in terms of load on the students:

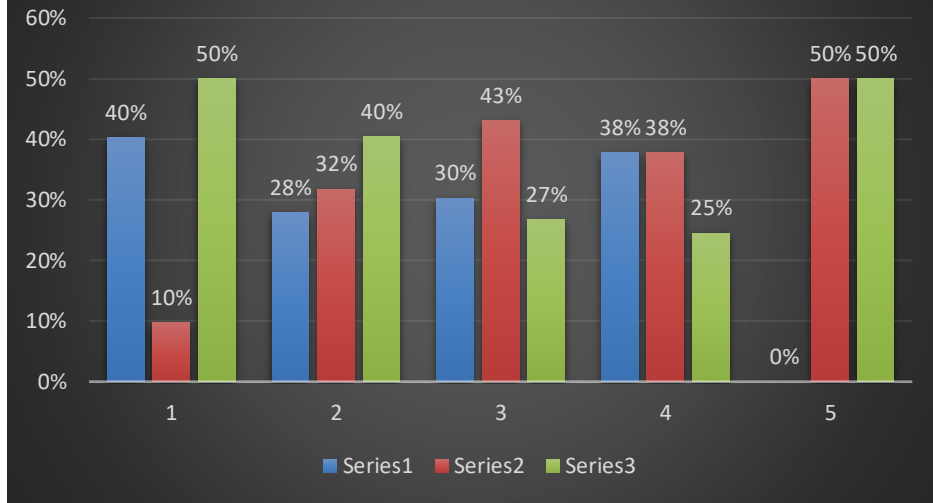




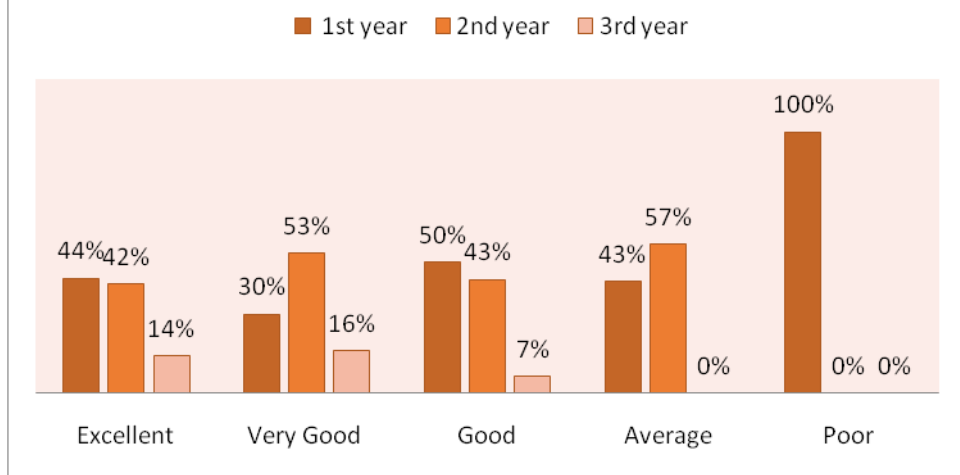
7. Rate the design of the courses in terms of encouragement and suitability for extra learning or self-learning:



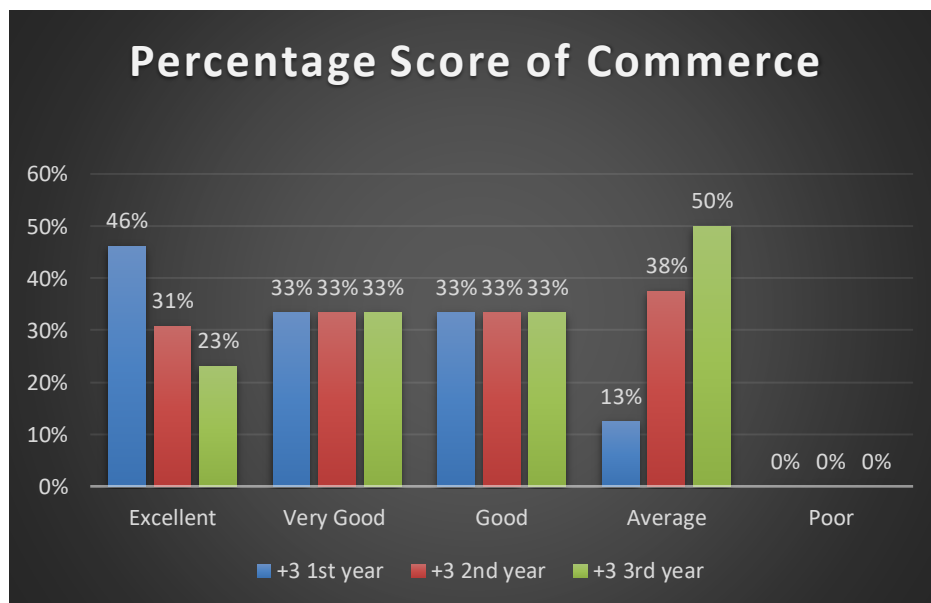
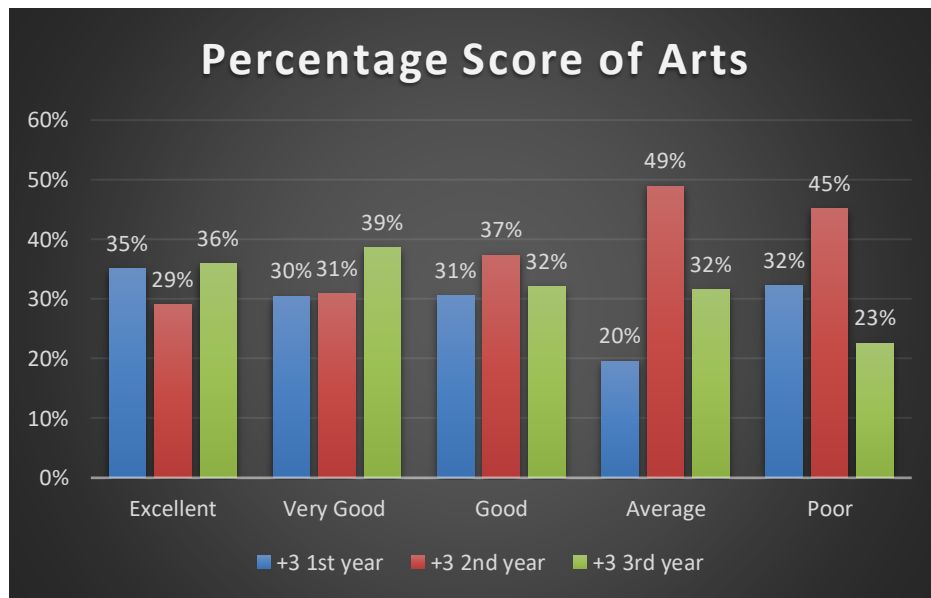
Percentage Score of Science



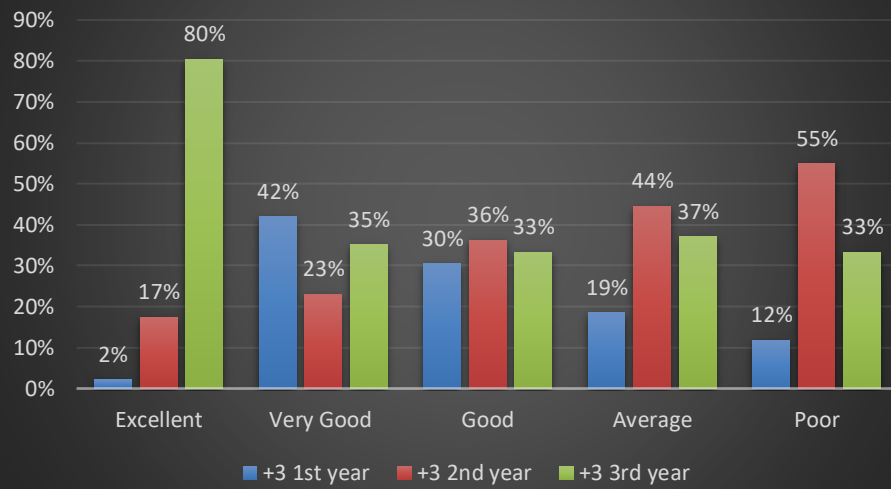
Percentage Score of Self- Finance



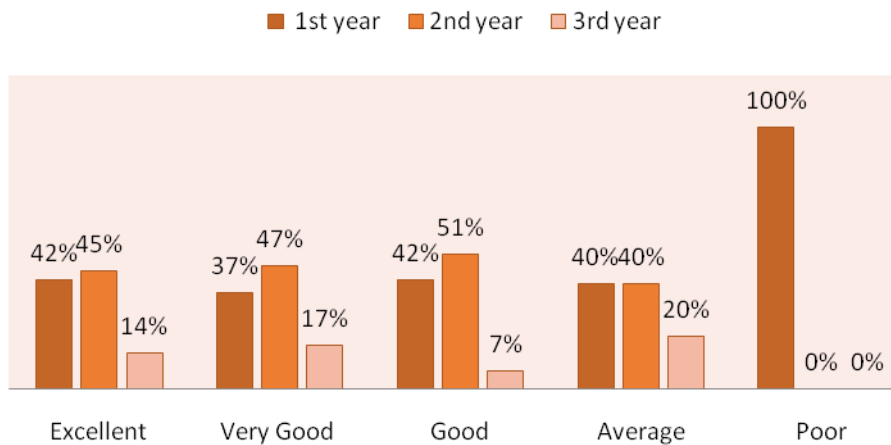
8. Rate the flexibility in choosing the electives:



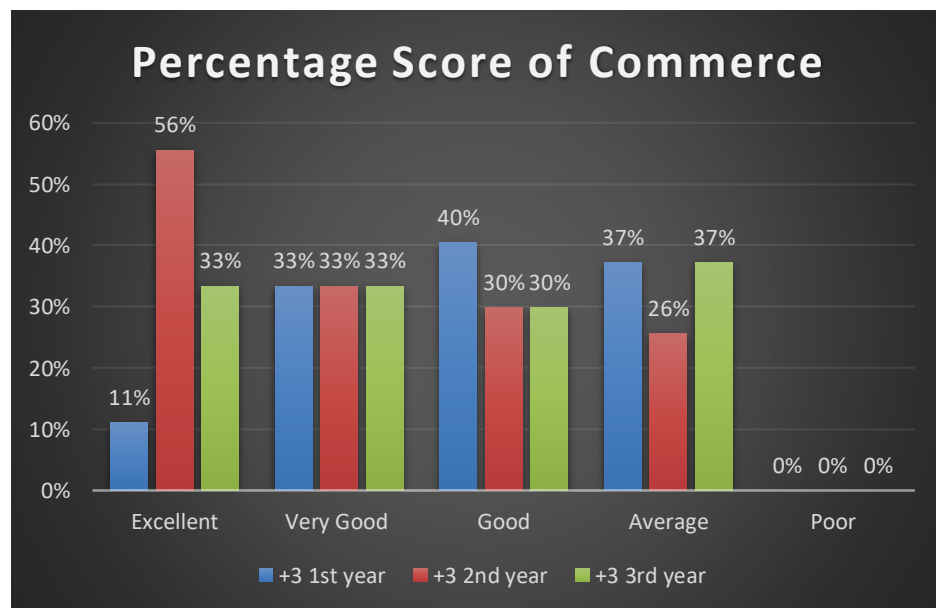
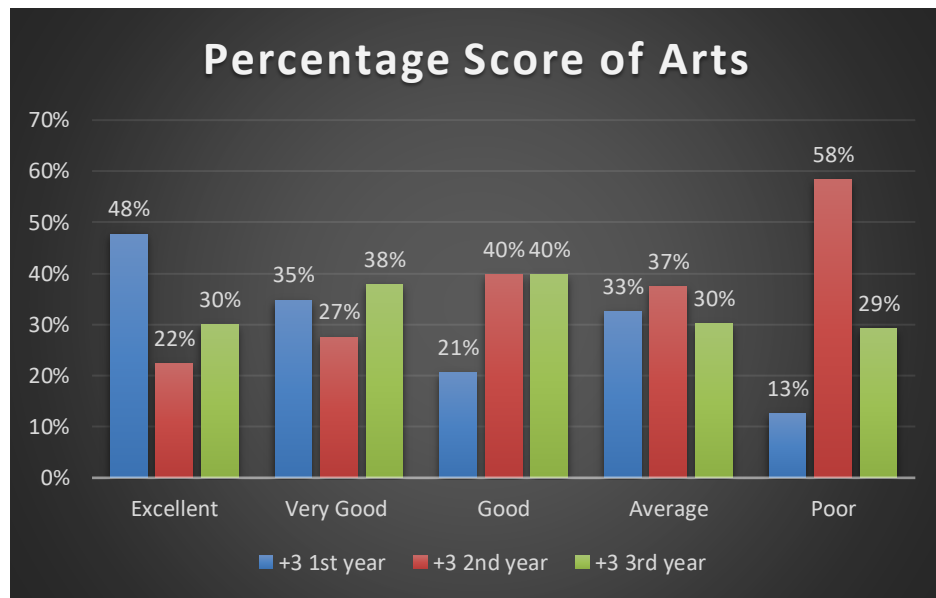
Percentage Score of Science



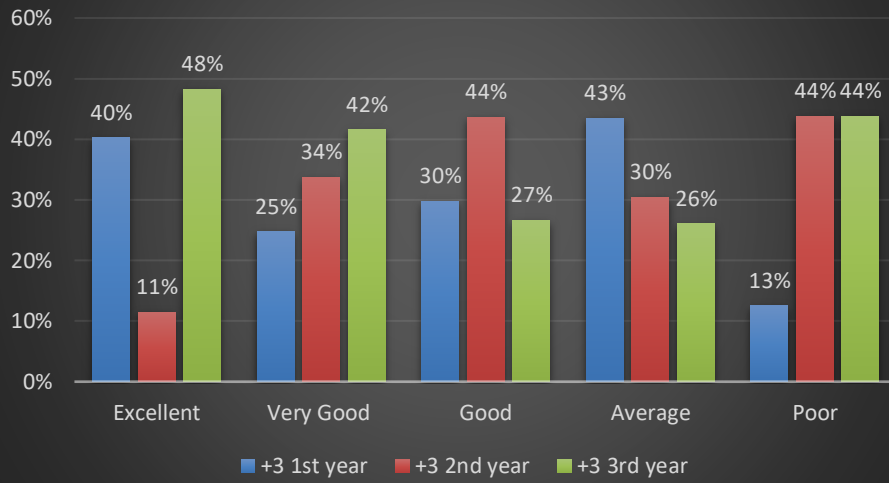
Percentage Score of Self- Finance



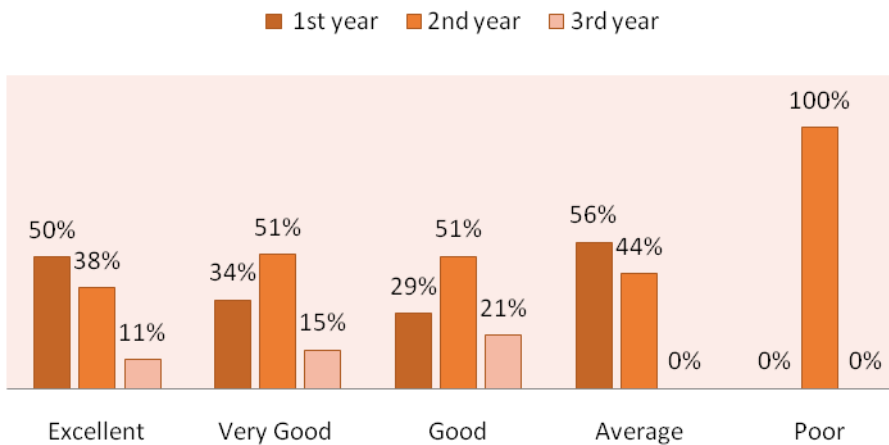
9. Rate the practical components of the course, if applicable:



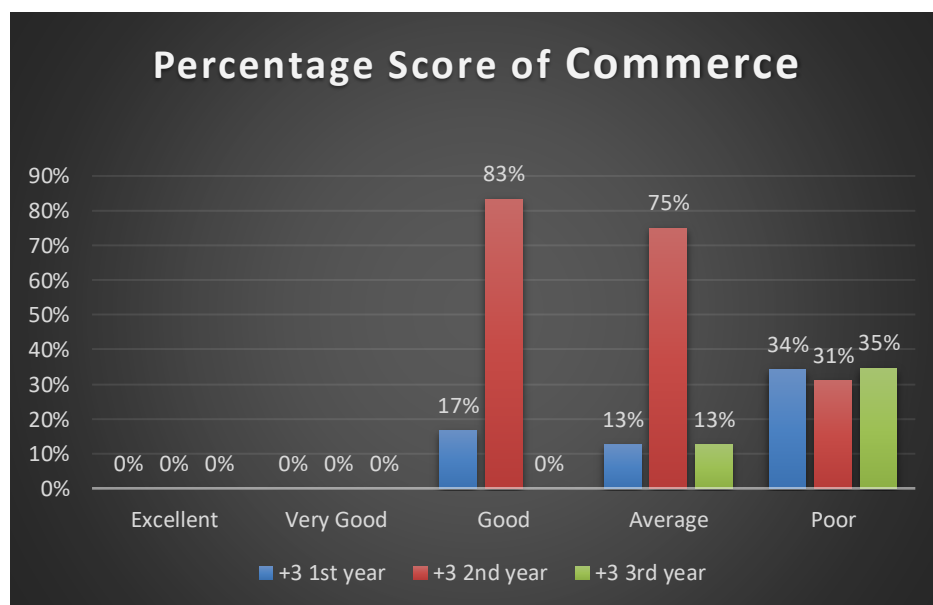
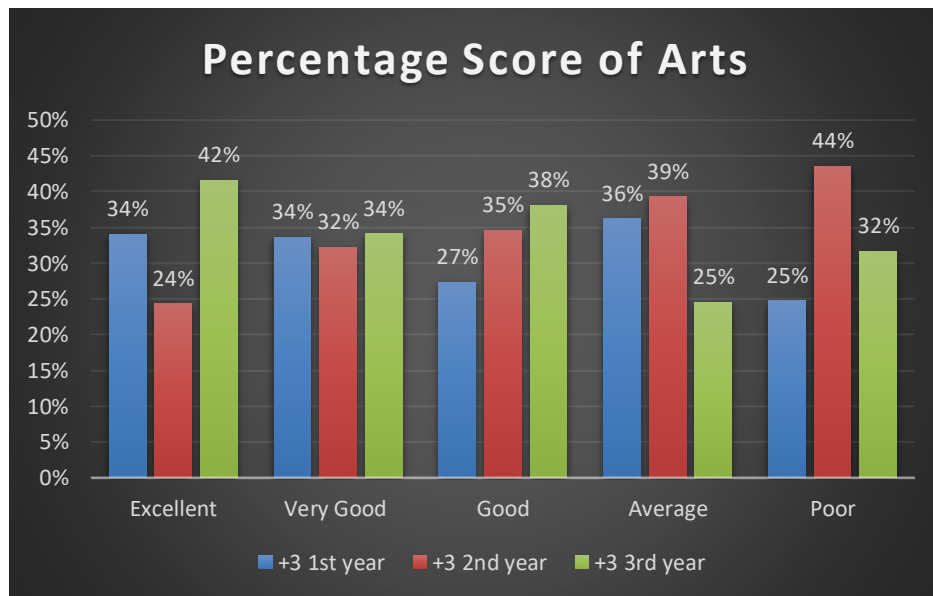
Percentage Score of Science



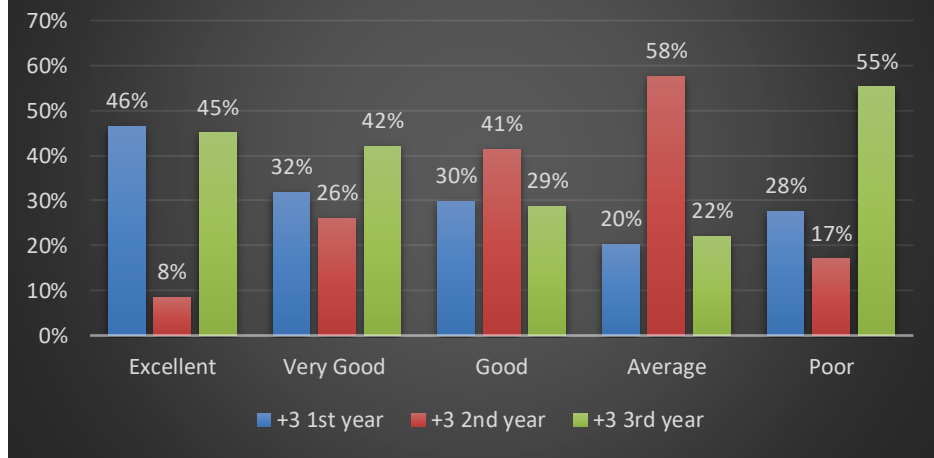
Percentage Score of Self- Finance



10. Rate the IT infrastructure of the institution in teaching the courses:



Percentage Score of Science



Percentage Score of Self- Finance

